



# 2008 Data: Poverty, Health Insurance & Household Income

Welfare Advocates

September 17, 2008

Neil Bergsman & Branden McLeod  
Maryland Budget & Tax Policy Institute

# Main Points

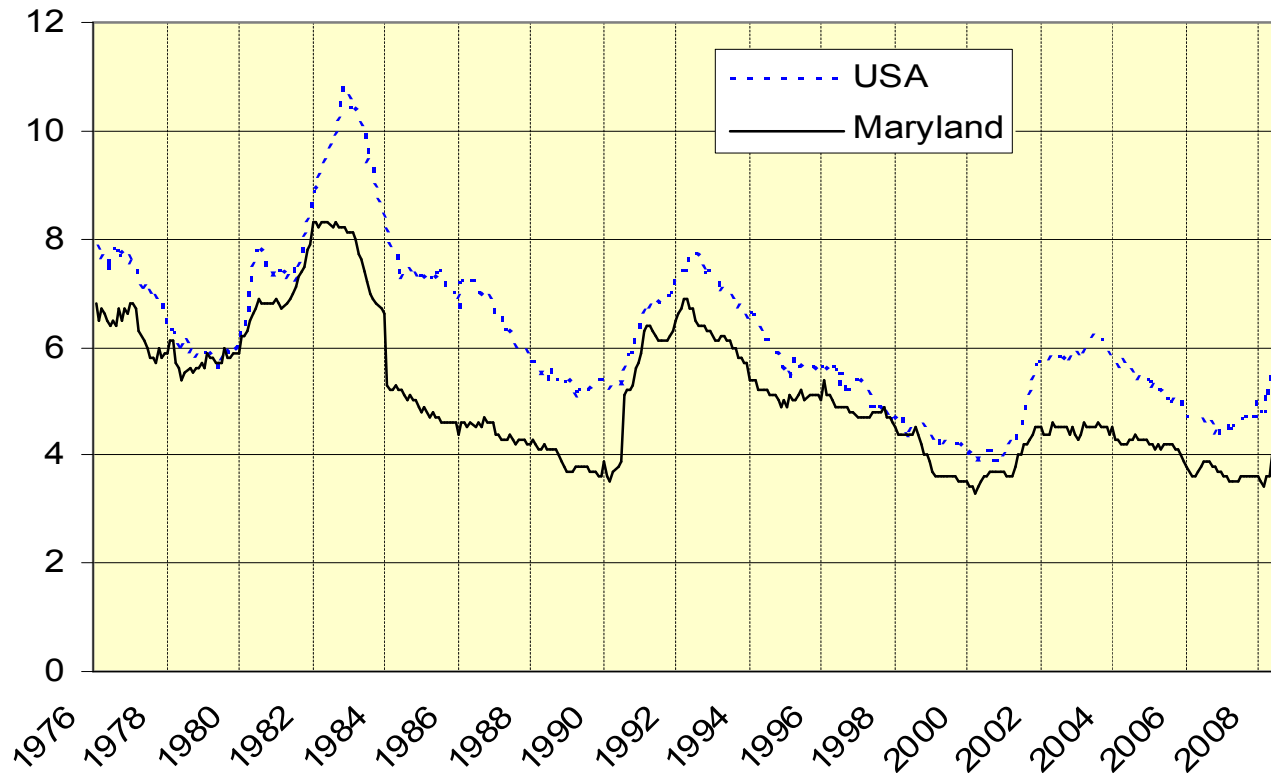
- Assessment of the 2001 – 2007 economic cycle
- For the nation
  - Incomes stuck
  - Poverty stuck
  - Health coverage down
- For Maryland
  - Income up slightly
  - Poverty stuck
  - Health coverage down

■ *This marks the first time on record that poverty and the incomes of typical working-age households have worsened despite six consecutive years of economic growth.... The gains from the expansion were quite uneven and flowed primarily to high-income households.*

–Center on Poverty and Budget Priorities

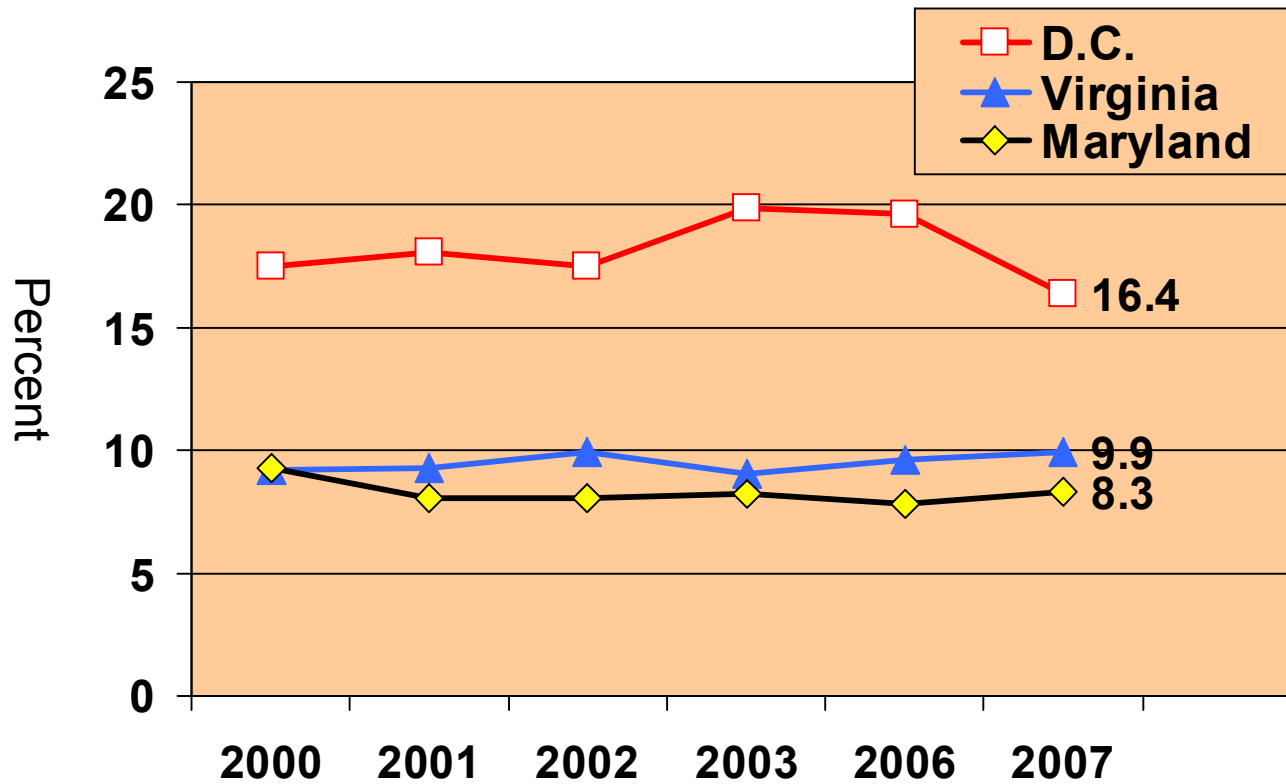
# Unemployment rates show economic cycles

Unemployment rates



- 2001-2007 reflects a full cycle of recession and expansion
- Source: BLS

# Total Poverty 2000-2007



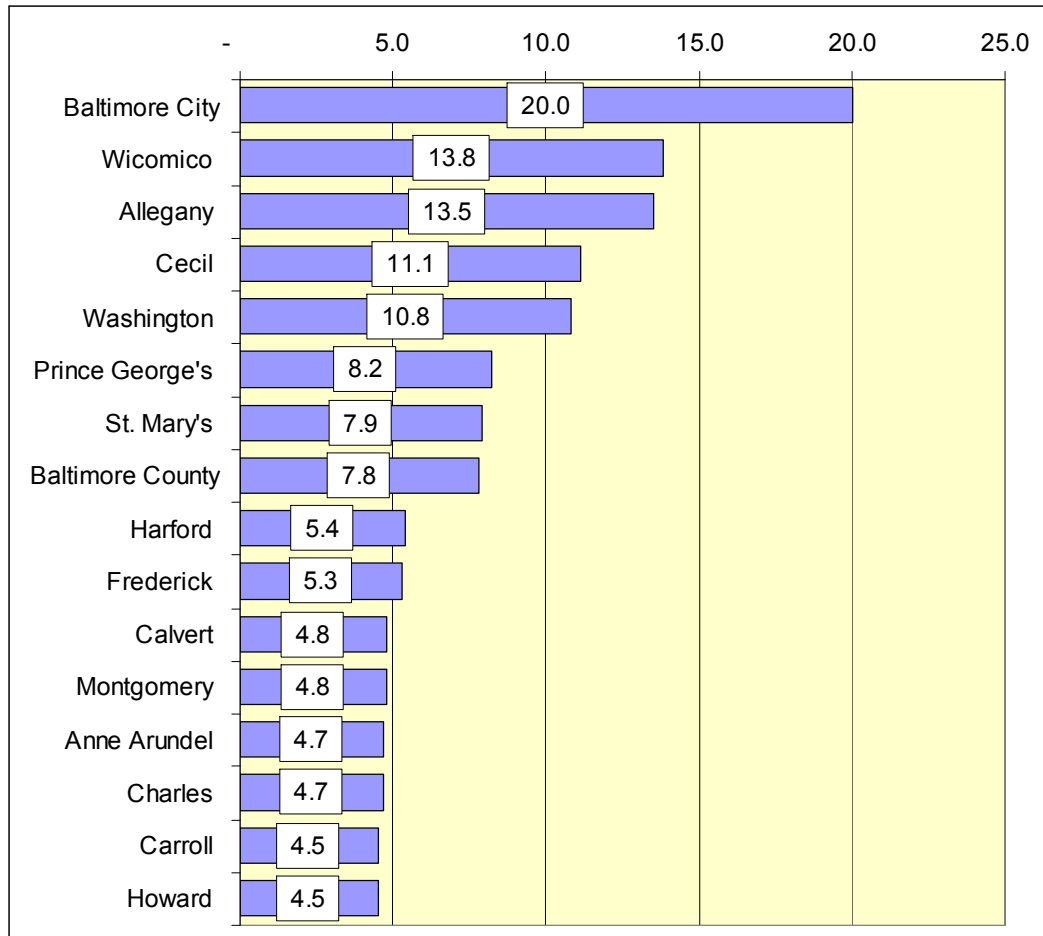
Source: CBPP

# Official Poverty thresholds for 2007

Family Size	Average Poverty Threshold
1	10,590
2	13,540
3	16,530
4	21,203
5	25,080

- Federal Poverty Level is too low, and it measures the wrong things
  - Developed in 1964
  - Not updated except for inflation
  - Does not reflect taxes, food stamps, housing vouchers, tax credits, child-care or transportation expenses
  - Does not reflect differences in cost-of living nationally
- Baltimore “Self Sufficiency Standard” for family of 4 was \$44,629 back in 2001.
- New York’s alternative poverty measure increased poverty rate there by 5 points.

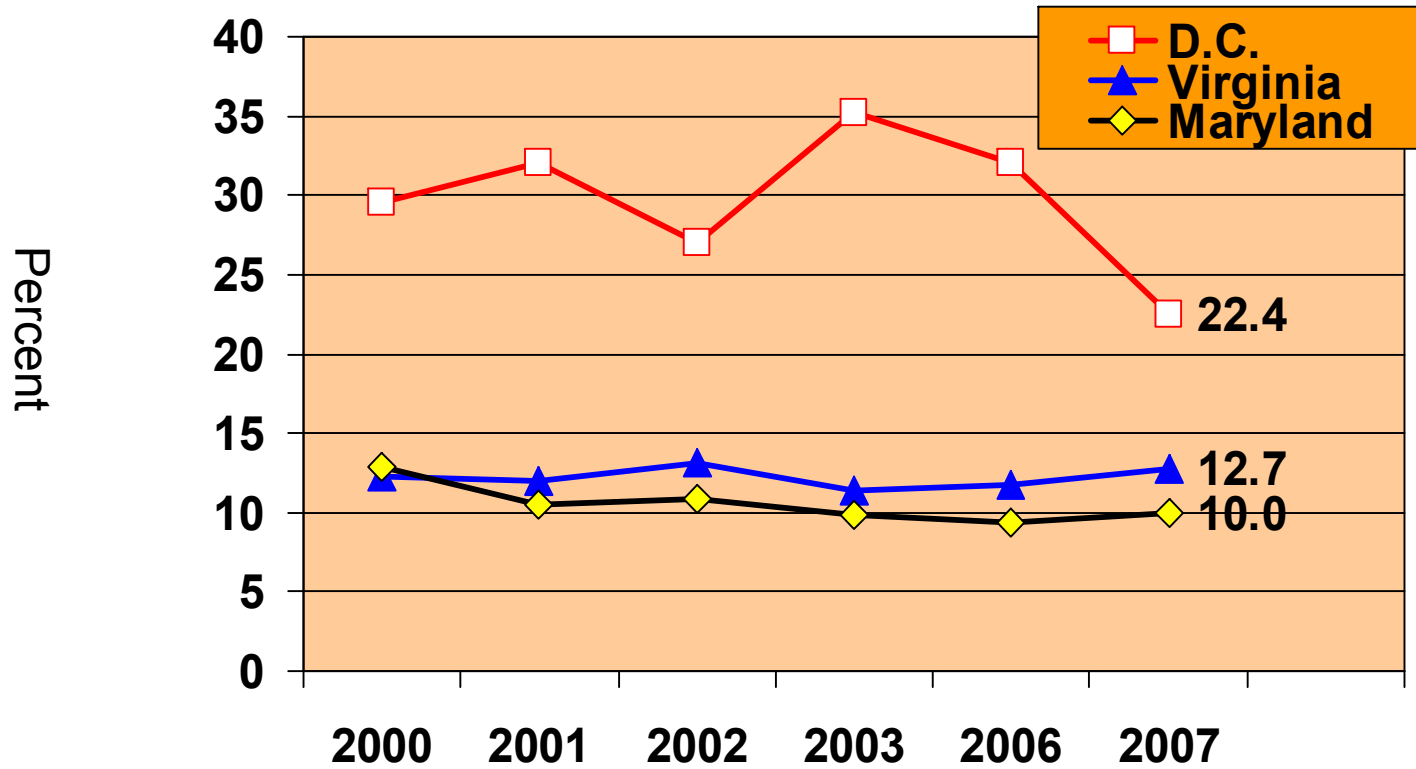
# Poverty in Maryland Counties



The average masks significant differences among local areas

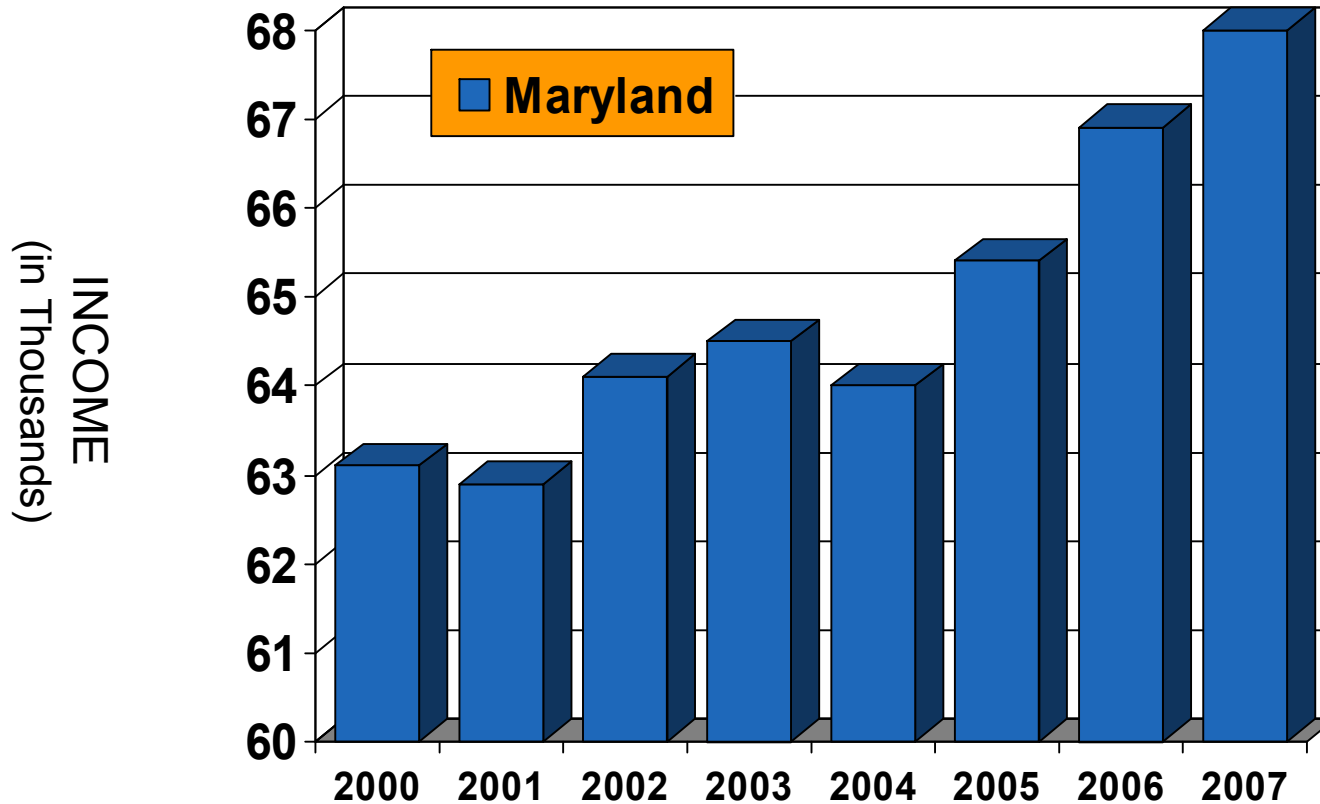
SOURCE: US Census [1]

# Child Poverty 2000-2007



Source: CBPP

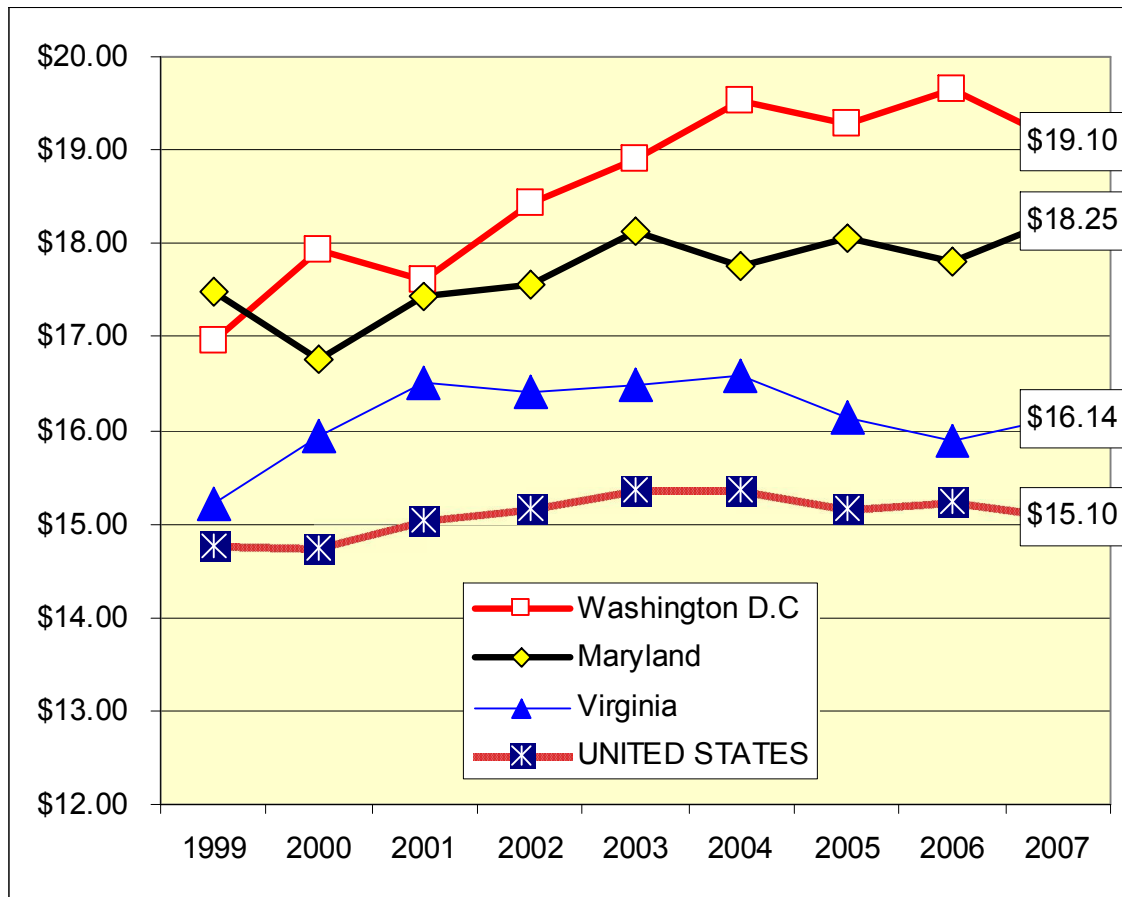
# Median Income 2000-2007



Source: CBPP

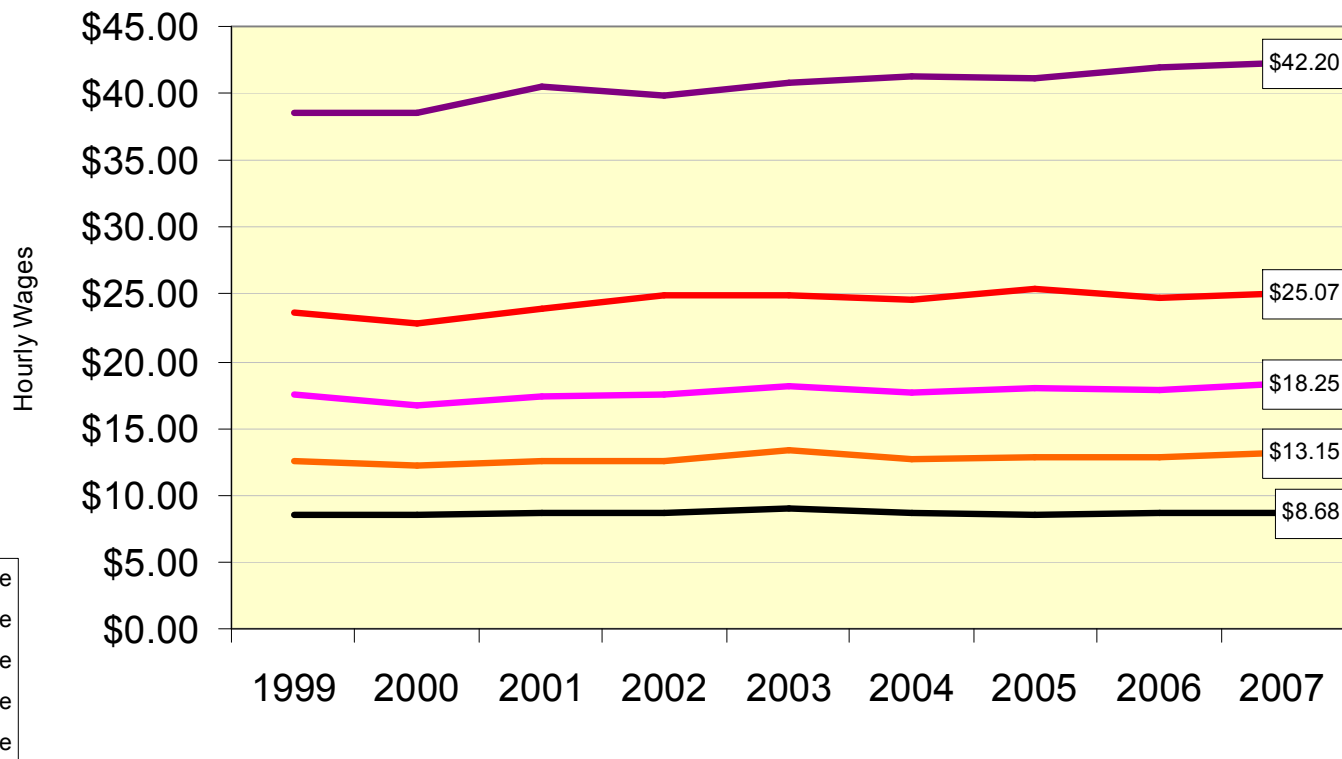
# Comparative wage rates

## Growth has been weak everywhere

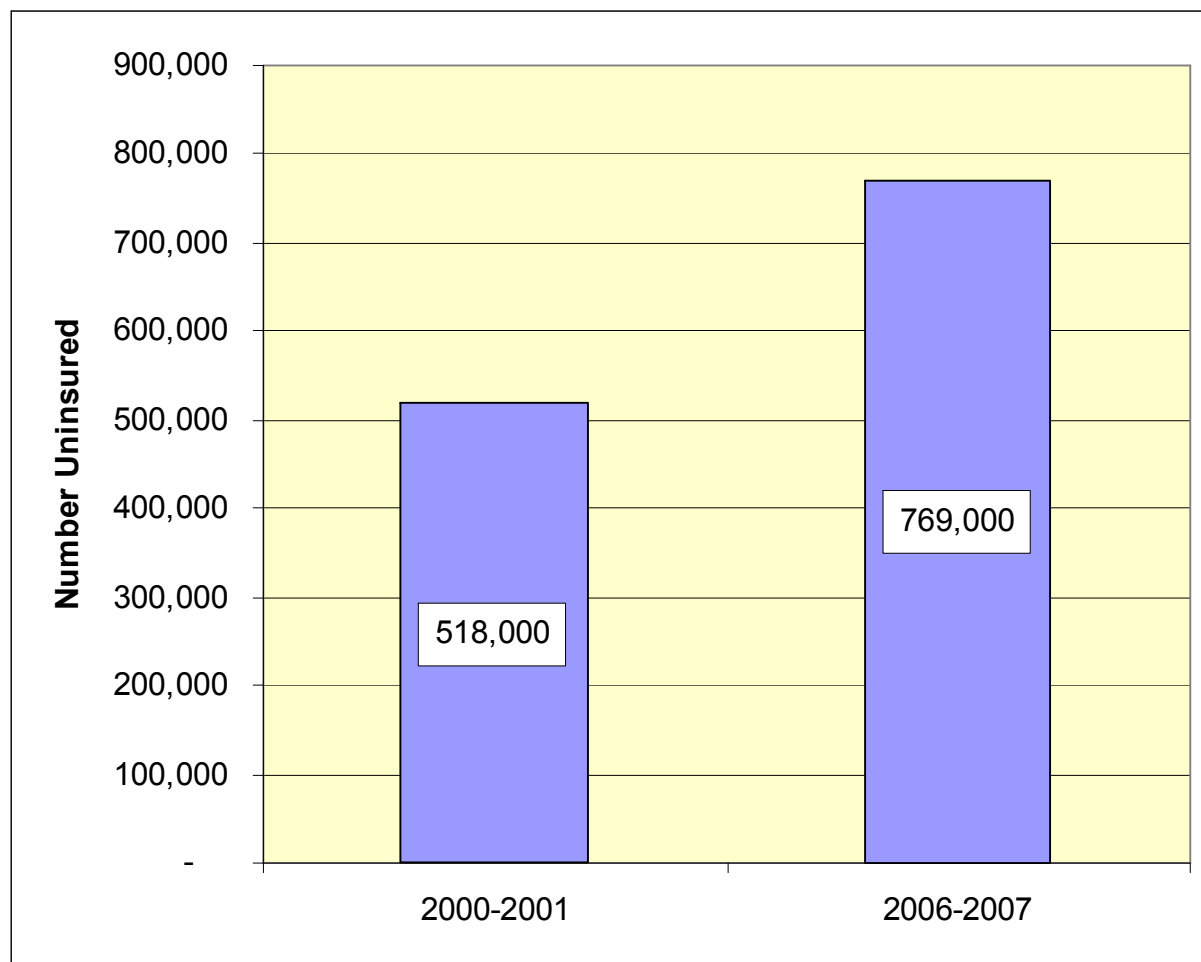


SOURCE: EPI

# Persistent Wage Gaps between High-earning and Low-earning Marylanders

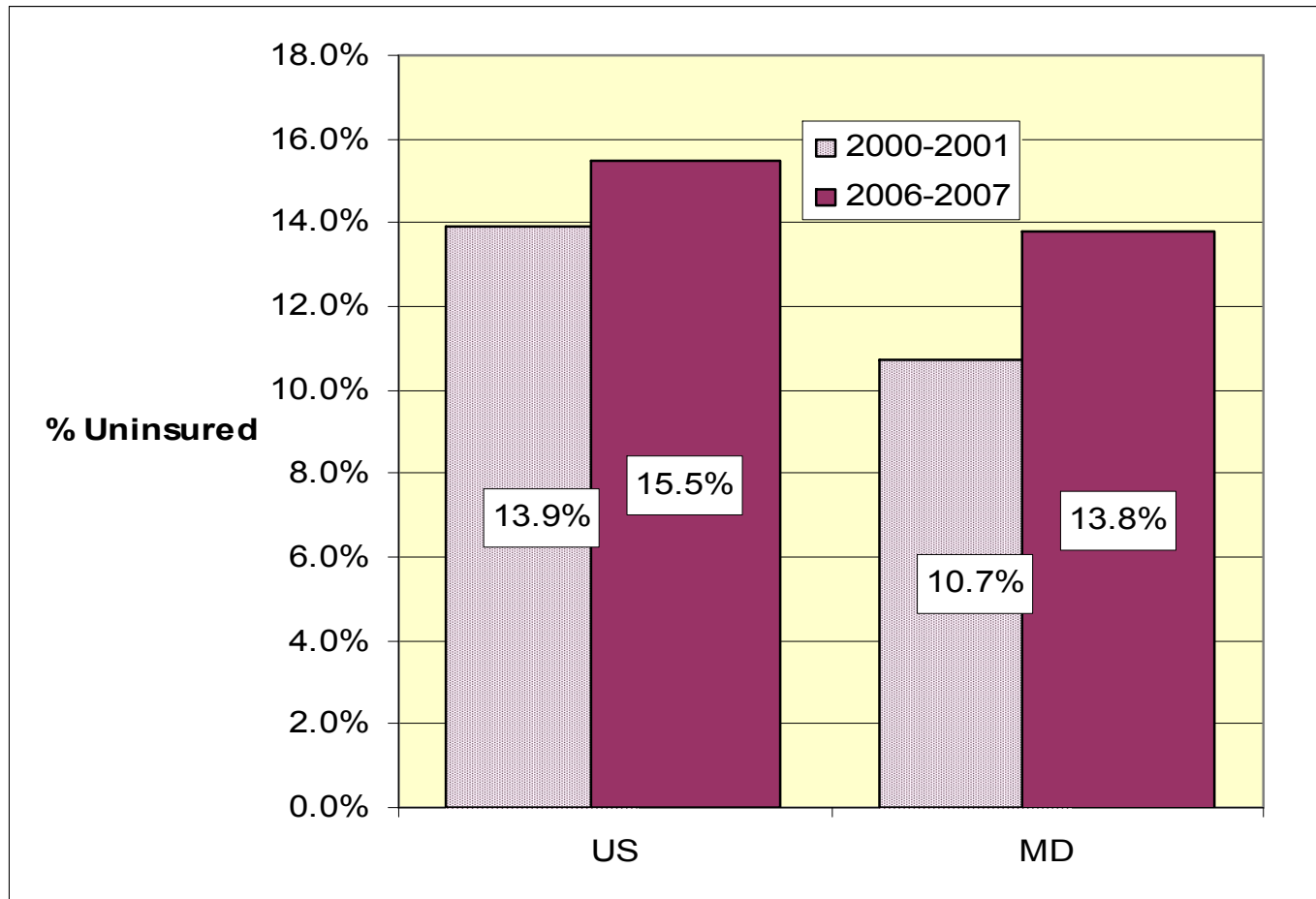


# 251,000 more Marylanders lack health coverage than in 2001



Source: CBPP

# Md trend mirrors US



# What Are the Stories Behind the Numbers?



- Please share them with us
  - We want to help you get your message out
- Neil
  - [nbergsman@mdnonprofit.org](mailto:nbergsman@mdnonprofit.org)
  - 410-727-6367 x17
- Branden
  - [bmcleod@mdnonprofit.org](mailto:bmcleod@mdnonprofit.org)
  - 410-727-6367 x45

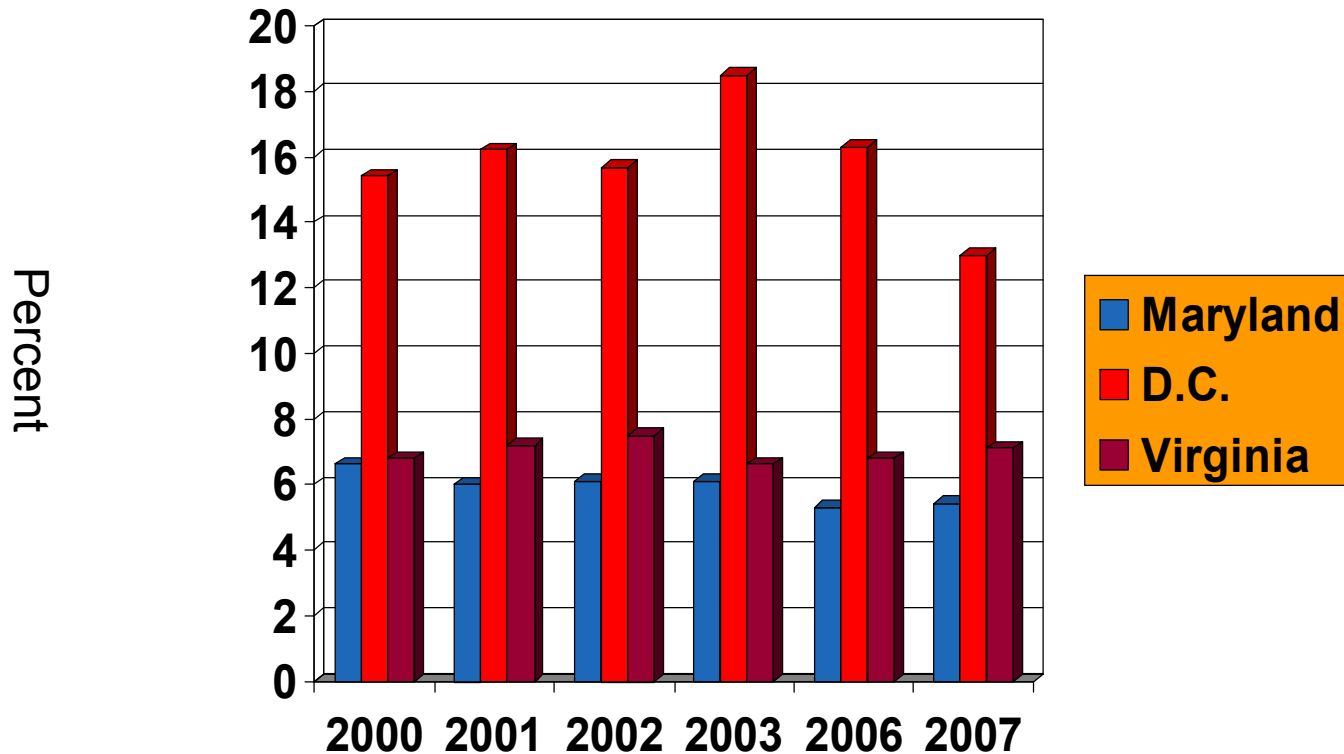
# *Thank You*

[www.marylandpolicy.org](http://www.marylandpolicy.org)

# Sources

- BLS – US Bureau of Labor Statistics, Databases, Tables & Calculators by Subject, <http://data.bls.gov/PDQ/servlet/SurveyOutputServlet>
- Blamk, R.M., How We measure Poverty. Brookings. September 15, 2008. [http://www.brookings.edu/opinions/2008/0915\\_measure\\_poverty\\_blank.aspx?p=1](http://www.brookings.edu/opinions/2008/0915_measure_poverty_blank.aspx?p=1)
- CBPP - Center on Budget & Policy Priorities compilation of U.S Census Bureau ACS data 2001-2008. Note: In 2006 the Census Bureau adopted a major methodology change. Therefore, 2004-2005 data are hidden to prevent unreliable comparisons.
- EPI Economic Policy Institute analysis of US Census Data
- Pearce, D., and Brooks, J., (December 2001) The Self Sufficiency Standard for Maryland, Advocates for Children and Youth and Center for Poverty Solutions, <http://www.wowonline.org/ourprograms/fess/state-resources/SSS/The%20Self-Sufficiency%20Standard%20for%20Maryland.pdf>
- US Census – US Census Bureau – American Factfinder <http://factfinder.census.gov>
- [1] Maryland – County GCT1701. Percent of People Below Poverty Level in the Past 12 Months (For Whom Poverty Status is Determined): 2007 Universe: Population for whom poverty status is determined 2007 American Community Survey 1-Year Estimates
- [2] Poverty Thresholds for 2007 by Size of Family and Number of Related Children Under 18 Years

# Family Poverty 2000-2007



**Source:** Center on Budget & Policy Priorities compilation of U.S. Census Bureau ACS data 2001-2008. Note: In 2006 the Census Bureau adopted a major methodology change. Therefore, 2004-2005 data are hidden to prevent unreliable comparisons.